

COW MAT



We offer comfort rubber mats for every application in the cow house, especially developed for and optimally adapted to the particular demands of dairy cows respectively young cattle.

Model Selection



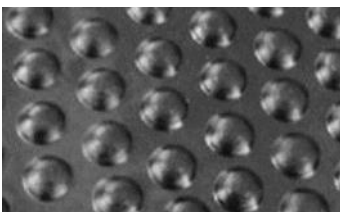
Surface:	Type 1
Bottom:	plain/ribbed
Tensile strength (Mpa):	4
Elongation (%):	250
Hardness (ShoreA):	65±5
Thickness (mm):	8-17
Width (mm):	1000-2000
Others:	1ply fabric



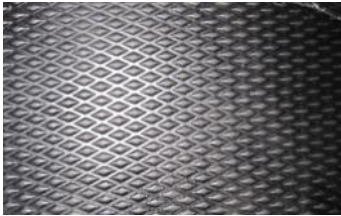
Surface:	Type 2
Bottom:	plain/fabric impression/ribbed
Tensile strength (Mpa):	4
Elongation (%):	250
Hardness (ShoreA):	65±5
Thickness (mm):	19
Width (mm):	1000-1830
Others:	1ply fabric



Surface:	Type 3
Bottom:	square
Tensile strength (Mpa):	4
Elongation (%):	250
Hardness (ShoreA):	65±5
Size (mm):	12x1220x1830



Surface:	Type 4
Bottom:	ribbed
Tensile strength (Mpa):	4
Elongation (%):	250
Hardness (ShoreA):	65±5
Size (mm):	17x1220x1830



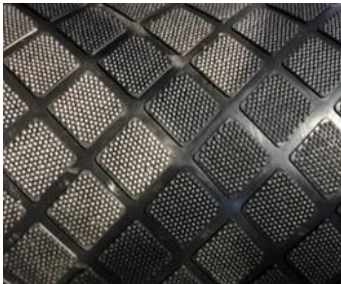
Surface:	Type 5
Bottom:	ribbed
Tensile strength (Mpa):	4
Elongation (%):	250
Hardness (ShoreA):	65±5
Size (mm):	33x1220x1830



Surface:	Type 6
Bottom:	fabric impression
Tensile strength (Mpa):	7-12
Elongation (%):	450
Hardness (ShoreA):	70±5
Thickness (mm):	4
Width (mm):	1000-2000
Others:	1ply fabric



Surface:	Type 7
Bottom:	fabric impression
Tensile strength (Mpa):	4
Elongation (%):	300
Hardness (ShoreA):	65±5
Thickness (mm):	20
Width (mm):	1800
Others:	1ply fabric



Surface:	Type 8
Bottom:	ribbed
Tensile strength (Mpa):	4
Elongation (%):	300
Hardness (ShoreA):	65±5
Thickness (mm):	17-20
Width (mm):	1000-2000
Others:	1ply fabric



Surface:	Type 9
Bottom:	big ribbed
Tensile strength (Mpa):	4
Elongation (%):	300
Hardness (ShoreA):	65±5
Thickness (mm):	17-20
Width (mm):	1200-1700
Others:	1ply fabric



Surface:	Type 10
Bottom:	fabric impression
Tensile strength (Mpa):	5
Elongation (%):	300
Hardness (ShoreA):	65±5
Thickness (mm):	6-8
Width (mm):	1000-2000
Others:	1ply fabric