

IMPACT BAR / BED

IMPACT BAR

Application: An important cushion part, used in belt conveyor material guiding groove, blanking point below the belt. Outstanding capability to absorb impact and low friction coefficient. It slows down the material on the conveyor belt to eliminate losses, and protects the belt against the damage by the impact of sharp.

Surface Material: UHMW, PE

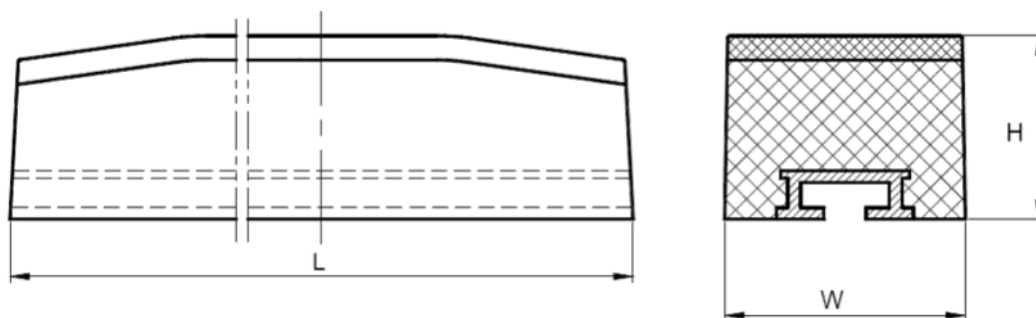
Type: General, High elastic, Fire Resistant



Technical Data

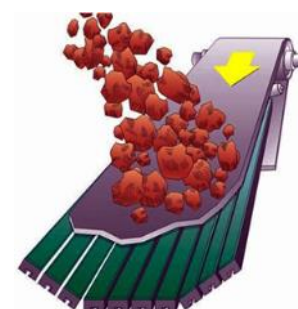
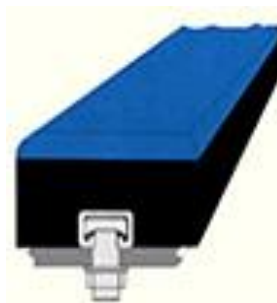
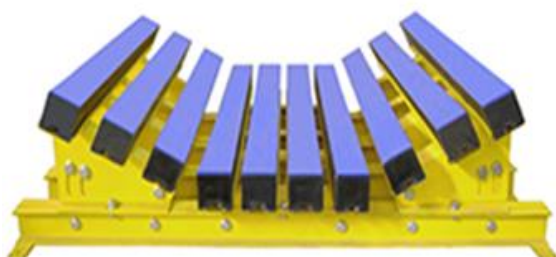
	Description	Unit	Specification
Cover properties	Cover material		UHMWPE
	Grade	Molecular Weight	$\geq 4,000,000$
	Color	-	Green/Blue/White/Orange
	Specific Gravity	g/cm ³	0.94
	Friction Coefficient		0.07
	Tensile Strength	Mpa	30
Rubber cushion compound	Elongation	%	$>=350$
	Specific Gravity	g/cm ³	1.27
	Hardness	ShoreA	60+/-5
Adhesion	UHMWPE & Rubber	N/mm	6
	Rubber & Aluminium part	N/mm	6

Dimension Of Impact Bar



Specification (mm)	Height (mm)	Width (mm)	Length (mm)
1220*100*50	50	100	1220
1220*100*75	75	100	1220
1220*100*100	100	100	1220
1400*100*50	50	100	1400
1400*100*75	75	100	1400
1400*100*100	100	100	1400
1524*100*50	50	100	1524
1524*100*75	75	100	1524
1524*100*100	100	100	1524
1600*100*50	50	100	1600
1600*100*75	75	100	1600
1600*100*100	100	100	1600
1800*100*50	50	100	1800
1800*100*75	75	100	1800
1800*100*100	100	100	1800

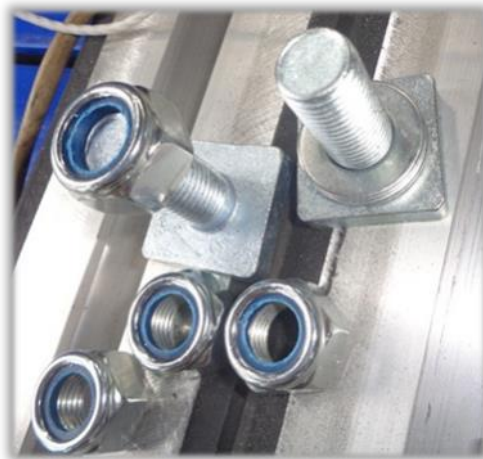
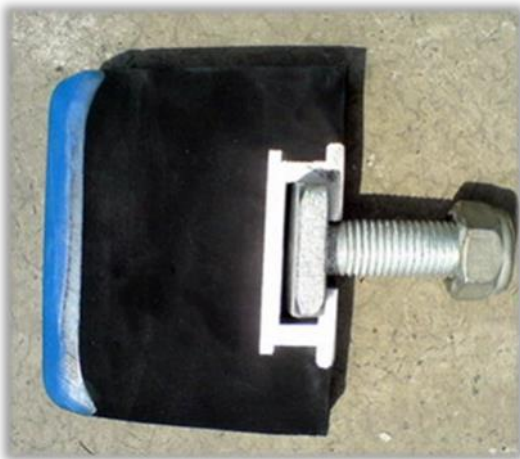
IMPACT BED



Model Selection

Belt width	Bar number			Distance (mm)		Roller width
	left	Center	right	both sides	Center	
550	1	2	1	50	0	200
650	2	2	2	25	25	250
800	2	3	2	50	5	315
1000	3	3	3	25	25	380
1200	3	4	3	55	20	465
1400	4	5	4	45	7	530
1600	5	5	5	25	25	600
1800	5	6	5	25	10	670
2000	6	6	6	20	250	750

T-BOLT



Type:M16-40, M16-50, M16-60

