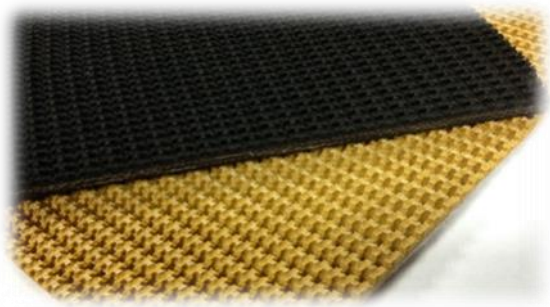


Rough Top Conveyor Belt

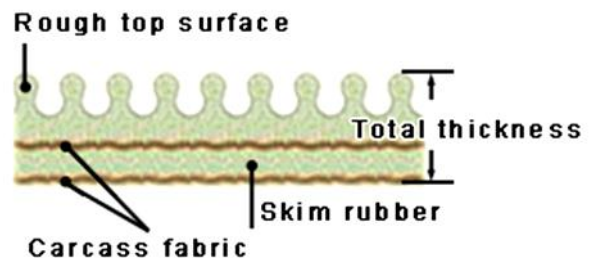


Application

Application: used for transporting light weight goods, e.g. belt flight loaders, lorry loaders, also suitable for fragile or deformed material, e.g. sacks, boxes & parcels, glass, on inclined surface at angles of maximal 35°.

Construction

- a. **Top Cover** — made of wear-resistant rubber with a non-slip surface. It has cushioning effect, mollifies and absorbs vibrations and impacts given on transported materials and simultaneously prevents slipping.
- b. **Carcass** — 2 or 3 plies EP fabrics.
- c. **Bottom Cover** — Available with rubber cover or bare back for slider bed applications.
- d. **Color** — The black top cover is recommended for utility type incline service while the tan cover is used for transporting packaged food products.



WHY OUR ROUGH TOP CONVEYOR BELT:

- ※ Advantage in less friction coefficient
- ※ Feasible in running over table & flat panel
- ※ Presence of pattern that aids in generating relief effect
- ※ Designed to absorb generated process vibrations, thus preventing possibility of material slippage

Standard Specification

Edge	No. of ply	Top cover	Bottom cover	Color	Standard Width
C/E	2	1/8" (3.2 mm)	1/16" (1.6 mm)	Black Tan	48"~80"
C/E	2	1/8" (3.2 mm)	Bare back		
C/E	3	1/8" (3.2 mm)	1/16" (1.6 mm)		
C/E	3	1/8" (3.2 mm)	Bare back		